

Solar Tracker PV-6M



Key specifications

Model:	PV-6M
Collector type:	Photovoltaic solar panel
Tracker type:	Dual-axis

Performance

Rated power:	1800 watt
Daily energy yield:	14-20 kWh
Annual energy yield:	2100-4000 kWh

Dimensions

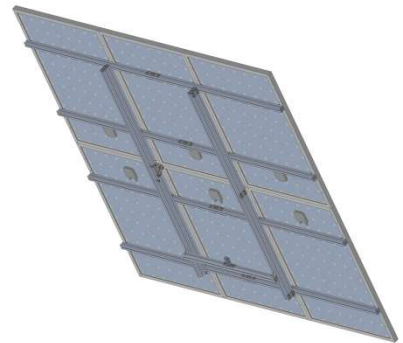
Length:	3280 mm
Width:	2976 mm
Area:	9.8 m ²
Weight:	200 kg

Overview

Solar Tracker PV-6M is a high efficiency, dual-axis tracking photovoltaic solar panel for home use. By following the sun, and using high efficiency solar panels, PV-6M delivers up to 70% more energy than a conventional, stationary solar panel with the same dimensions.

Panel features

- Tracker holds six 300 watt high performance Maysun solar panels featuring 18.4% efficiency.
- Generates 14-20 kWh electricity per sunny day, up to 2700 kWh per year in northern Europe or up to 4000 kWh per year in southern Europe.



Tracker features

- Automatically determines sun's location from anywhere in the world using GPS and internal calculations.
- Innovative two axis design using only one actuator.
- High precision tracking to maximize energy production.
- Rotates 180° horizontally and 20° to 70° vertically.
- Reliable, low energy consumption and silent operation.
- Simple and cost efficient installation.

