

Solar Tracker PV-4M



Key specifications

Model:	PV-4M
Collector type:	Photovoltaic solar panel
Tracker type:	Dual-axis

Performance

Rated power:	1200 watt
Daily energy yield:	9-14 kWh
Annual energy yield:	1400-2700 kWh

Dimensions

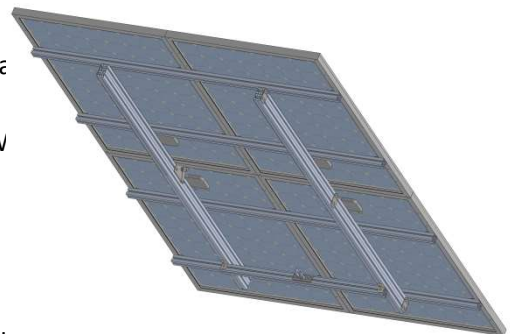
Length:	3280 mm
Width:	1984 mm
Area:	6.5 m ²
Weight:	150 kg

Overview

Solar Tracker PV-4M is a high efficiency, dual-axis tracking photovoltaic solar panel for home use. By following the sun, and using high efficiency solar panels, PV-4M delivers up to 70% more energy than a conventional, stationary solar panel with the same dimensions.

Panel features

- Tracker holds four 300 watt high performance Maysun solar panels featuring 18.4% efficiency.
- Generates 9-14 kWh electricity per sunny day, up to 1800 kWh per year in northern Europe or up to 2700 kWh per year in southern Europe.



Tracker features

- Automatically determines sun's location from anywhere in the world using GPS and internal calculations.
- Innovative two axis design using only one actuator.
- High precision tracking to maximize energy production.
- Rotates 180° horizontally and 20° to 70° vertically.
- Reliable, low energy consumption and silent operation.
- Simple and cost efficient installation.

