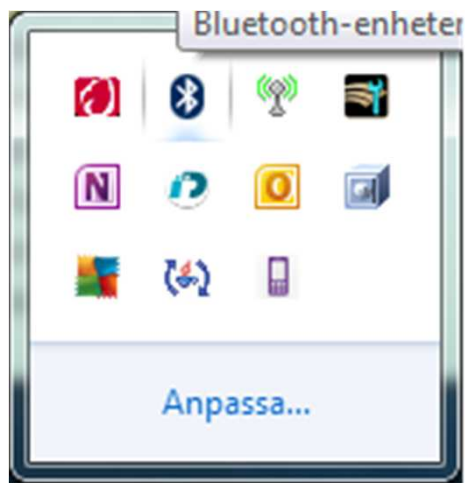
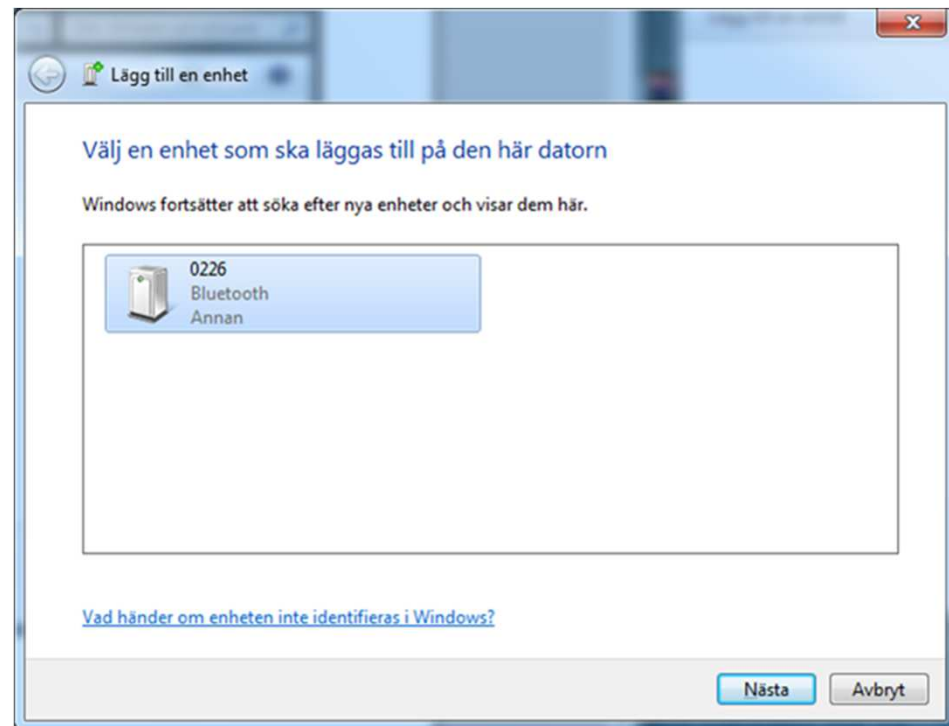


Contact with Flex sensor via the computer's internal Bluetooth

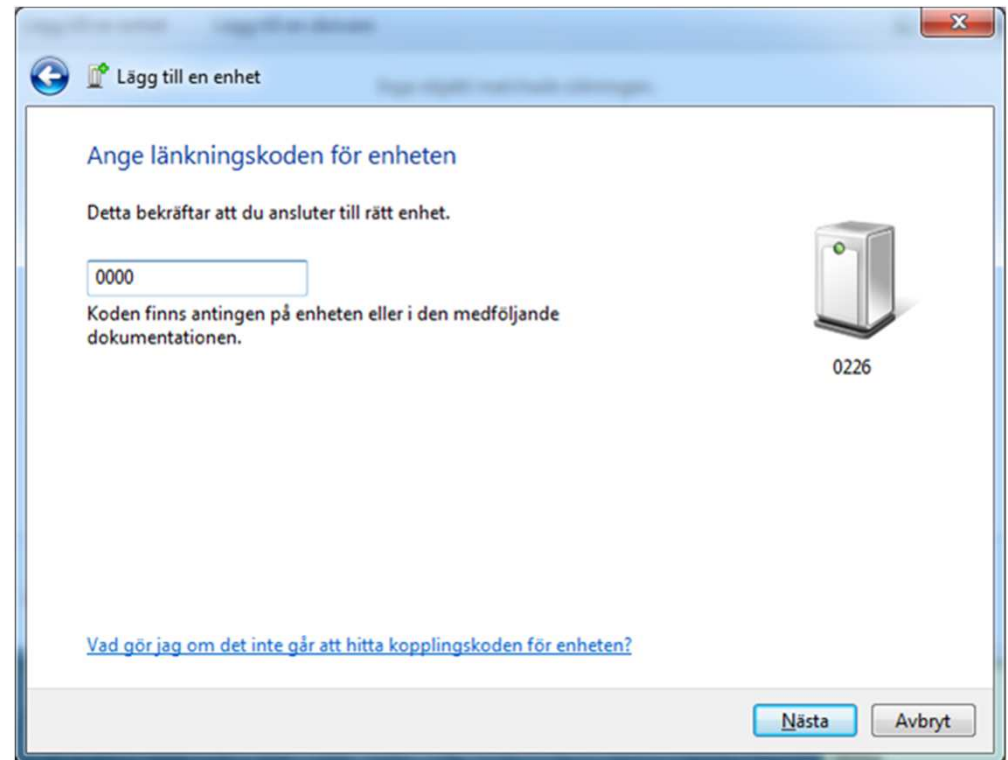
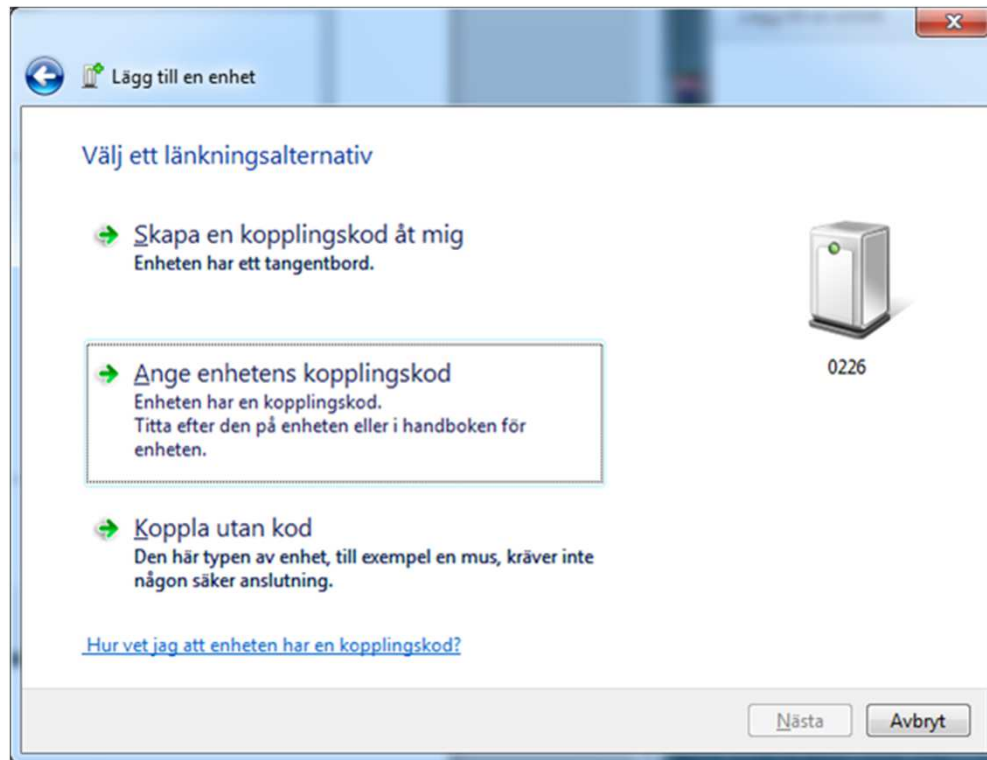
- Turn on the Flex sensor
- Open the computer's control panel, "Add a Bluetooth Device." The computer will recognize the Flex sensor and presents it as the last four digits of the sensor serial number. Mark the Flex sensor and click Next.



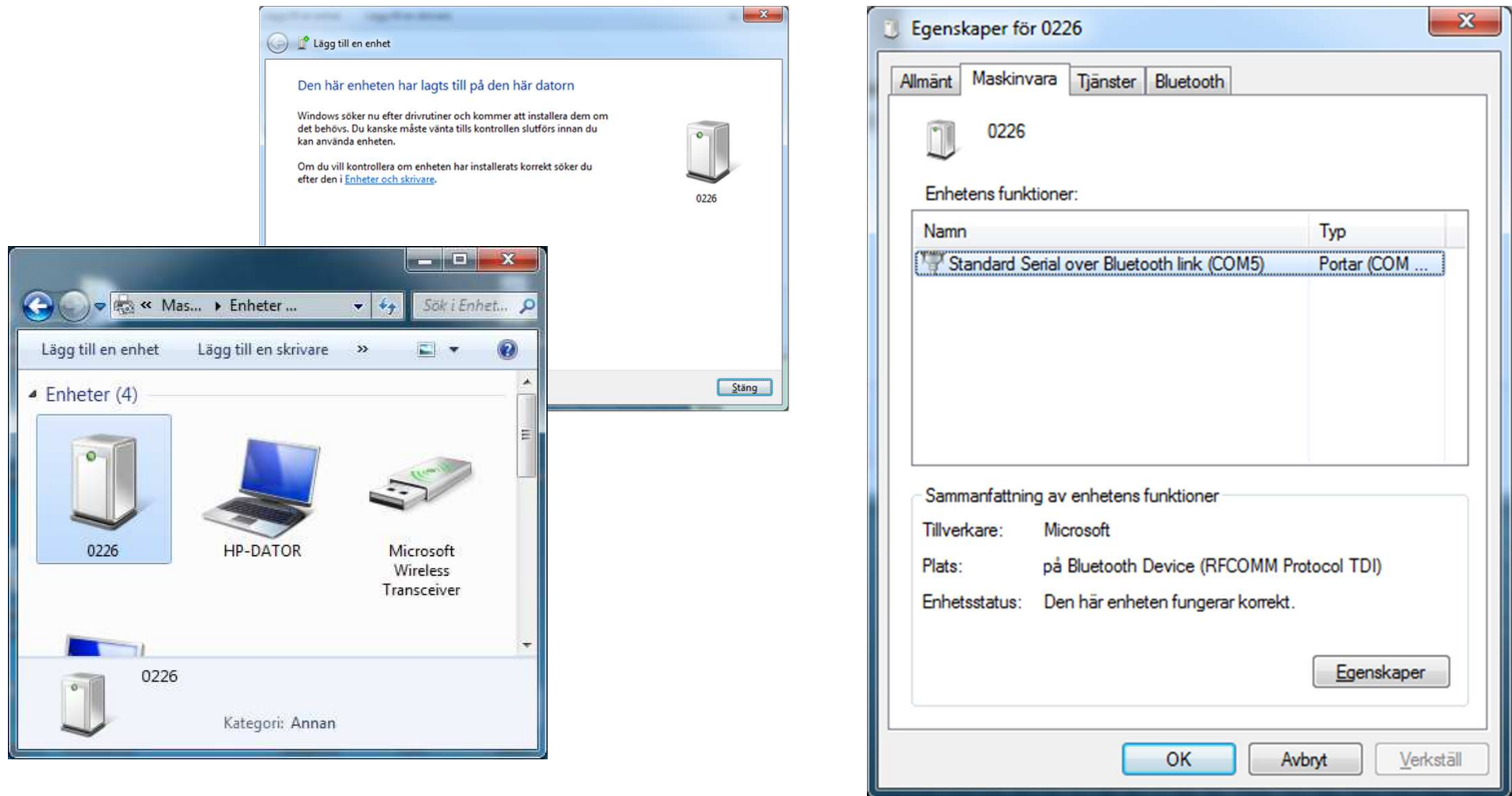
The description applies to computers with operating systems Windows Vista and Windows 7.



- Click on "Enter the switching code". It simplifies connection to the Flex sensor if a switching code is used. If the device is "Connected without code" then the computer will ask for a code every time you connect Flex sensor to the computer.
- Enter the linking code "0000" and press Next.



- Close "Add Device"
- Open Control Panel / Hardware and Sound / Devices and Printers. Right-click on the sensor icon and select Properties, click the Hardware.
- The computer has established a "Standard Serial over Bluetooth link" and set a number of the COM port.
- In this case COM 5



- Open the Balance program and click at the Sensor drop down curtain at the top right.
- Click the COM 5.
- After a few seconds, the indicator to the right of the curtain turns Green and the Flex sensor illuminates a blue LED which indicates connection between Computer and Flex sensor.

